



REQUEST FOR PROPOSAL

SANDBURG SIGNAGE
June 2024

Sandburg / 2400 Tom L. Wilson Blvd. / Galesburg, IL 61401
sandburg.edu



Galesburg campus: 2400 Tom L. Wilson Boulevard, Galesburg, IL 61401 | p: 309.341.2518 | f: 309.344.1395
Carthage campus: 305 Sandburg Drive, Carthage, IL 62321 | p: 217.357.3129 | f: 217.357.5312

Table of contents

I. Proposal overview	3
A. Sandburg background	3
B. Objectives	3
C. Scope of services	4
1. Internal signage	4
2. Internal wayfinding	4
3. External signage	5
4. External wayfinding	6
II. RFP schedule of events	6
III. Selection criteria	7
IV. General requirements	7
A. Receipt of bids	7

I. Proposal overview

A. Sandburg background

Carl Sandburg College is dedicated to serving the educational needs of western and central Illinois. With the fourth largest community college district in square miles, the college has served all or part of a 10-county area for more than 55 years. Students planning to transfer to a four-year university or enter the skilled workforce can select one of more than 40 programs the college offers. The college had more than 2,000 full- or part-time students enrolled for the 2023-2024 academic year. The main campus, located in Galesburg, IL, has an additional location in downtown Galesburg and a branch campus in Carthage, IL.

Mission

To provide all students with opportunities for success.

Vision

Where dreams come to life, and lives come to change.

B. Objectives

Work hand in hand with Sandburg Marketing & PR, physical plant and Sandburg contractors, including the Farnsworth Group and River City Construction, to accomplish the following, likely in stages based on the overall master plan:

INTERNAL SIGNAGE

- Clearly identify offices, classrooms, restrooms, stairways, elevators, etc.
 - Signage should be clean, clutter-free and on brand
 - Will begin with the new Science & Technology Center
 - Other buildings to be rolled out based on master plan
- Effectively highlight donor signage
 - 100 Extraordinary Women
 - Science & Technology Center donors

INTERNAL WAYFINDING

- Clearly indicate location of various rooms, areas and locations
 - Wayfinding should be clean, clutter-free and on brand
 - Will begin with the new Science & Technology Center

- Other buildings to be rolled out based on master plan

EXTERNAL SIGNAGE

- Clearly identify Sandburg using the new branding
 - New Galesburg campus monument sign reflecting new branding
 - New Carthage campus monument and building signs
- Clearly identify buildings on campus
 - Large, lit, external signs on all buildings
 - Start with the new Science & Technology Center
 - Other Galesburg campus buildings to be rolled out based on master plan

EXTERNAL WAYFINDING

- Create wayfinding signs that are clearly legible by driving by
 - Temporary signage will be needed initially until the master plan is more fleshed out/intact to provide permanent signs.

C. Scope of services

INTERNAL SIGNAGE

- **Design** — Provide various types of signage needed.
- **Quantity** — Breakdown of necessary office, classroom and common room signs included in addendum 2024.03.29_Signage Plans_Sandburg S+T Center – 02110287.00
 - Donor signage
 - Qty.: 2
 - Dimensions: TBD based on discussions with the Foundation and Marketing & PR and your recommendations
- **Permits** — Work with current contractors and local entities to ensure any necessary permits are secured in compliance prior to installation.
- **Installation** — Work with current contractors to ensure signage is installed properly.

INTERNAL WAYFINDING

- **Design** — Provide various types of signage needed.
- **Quantity** — Work with Sandburg Marketing & PR and contractors to determine most appropriate locations.
- **Permits** — Work with current contractors and local entities to ensure any necessary permits are secured in compliance prior to installation.

- **Installation** — Work with current contractors to ensure signage is installed properly.

EXTERNAL SIGNAGE

- **Design** — Provide various types of signage needed.
- **Quantity** — Breakdown of necessary signs includes:
 - **New Galesburg campus monument sign reflecting new branding***
 - Original sign is covered by current sign
 - Similar approach is likely the prudent option
 - **New Carthage campus monument & building signs reflecting new branding***
 - **Zone 1**
 - Building A (current criminology, marketing; fall will be temporary Testing Center, bookstore)
 - Building AA (current nursing; fall will be temporary Student Life, Diversity & Inclusion, Tutoring and the Welcome Center)
 - **Zone 2**
 - Building B (Crist Student Center) Student Services, student accounts payable, Innkeepers (Charger Café)
 - **Zone 3***
 - Science & Technology Center (biology, chemistry, physics, natural sciences, nursing, dental hygiene)
 - **Zone 4**
 - Building C (Information Technology, dean of transfer, humanities, fine arts, social sciences)
 - Building D (lakeside lounge, Charger patio, art gallery business office, technology services)
 - **Zone 5**
 - Building E (administration, library, Faculty Teaching Learning Center (FTLC), receiving/loading dock, mailroom)
 - **Zone 6**
 - Building F (Fitness Center, John M. Lewis Gymnasium & theater, art classrooms)
 - Building H (mortuary science)
 - **Zone 10**
 - Softball/baseball fields

- Grounds and maintenance building
- **Zone 13**
 - Building G (Advanced Technology Center)
- **Permits** — Work with current contractors and local entities to ensure any necessary permits are secured in compliance prior to installation.
- **Installation** — Work with current contractors to ensure signage is installed properly.

EXTERNAL WAYFINDING

- **Design** — Provide various types of signage needed.
- **Quantity** — Work with Sandburg Marketing & PR and contractors to determine most appropriate locations.
- **Permits** — Work with current contractors and local entities to ensure any necessary permits are secured in compliance prior to installation.
- **Installation** — Work with current contractors to ensure signage is installed properly.

*First phase in the overall project.

II. RFP schedule of events

Event	Date and time
Issue request for proposal (RFP)	June 10, 2024
Pre-bid meeting	June 25, 2024 @ 11 a.m. CT
Proposal submittals due	July 2, 2024 @ 2:30 p.m. CT
Proposal evaluation period	July 8-12, 2024
Winning bid presented to Board of Trustees for approval	July 25, 2024
Award RFP to selected agency	July 26, 2024
Kick-off project with selected agency	Aug. 1, 2024

Schedule notes: The above dates are subject to change at the discretion of Sandburg.

III. Selection criteria

Sandburg is seeking to partner with a full-service entity who:

1. Has demonstrated expertise and experience in internal and external signage and wayfinding.
2. Has the ability to adhere to and showcase our new branding.
3. Will be a natural fit and extension of the Sandburg Marketing & PR team, facilities, and our contractors (architects and builder) in terms of personalities and expertise to ensure excellent and seamless collaboration and partnership from kick-off through completion.

Proposals will be evaluated based on the most competitive offer — taking into consideration the quality of services offered, fit with Marketing & PR's philosophies and work styles, and how well the proposal meets the RFP requirements, above selection criteria and college needs. This RFP identifies the minimum requirements of the project. Prospective bidders are encouraged to submit proposals that both adhere to industry best practices as well as leverage the vendor's successful prior in-house experiences with similar projects at other higher-education institutions.

IV. General requirements

Sealed bids will be received by Sandburg for the **signage** project, pursuant to specifications.

A. Receipt of bids

Vendors shall submit proposals for the **signage** project before 2:30 p.m. CT, July 2, one of the following ways:

Email

Send PDF of proposal to dsmith@sandburg.edu, cc'ing lnagel@sandburg.edu.

Mail

Office Manager for the President
Carl Sandburg College
2400 Tom L. Wilson Blvd.
Galesburg, IL 61401

Bids will be publicly opened in the Board Room E200, read aloud and recorded. Bids shall be held good and not withdrawn for 60 calendar days from the date of bid opening.

Sandburg reserves the right to waive any irregularities and to accept any or reject all bids when in the opinion of Sandburg, such action will serve the college's best interest.

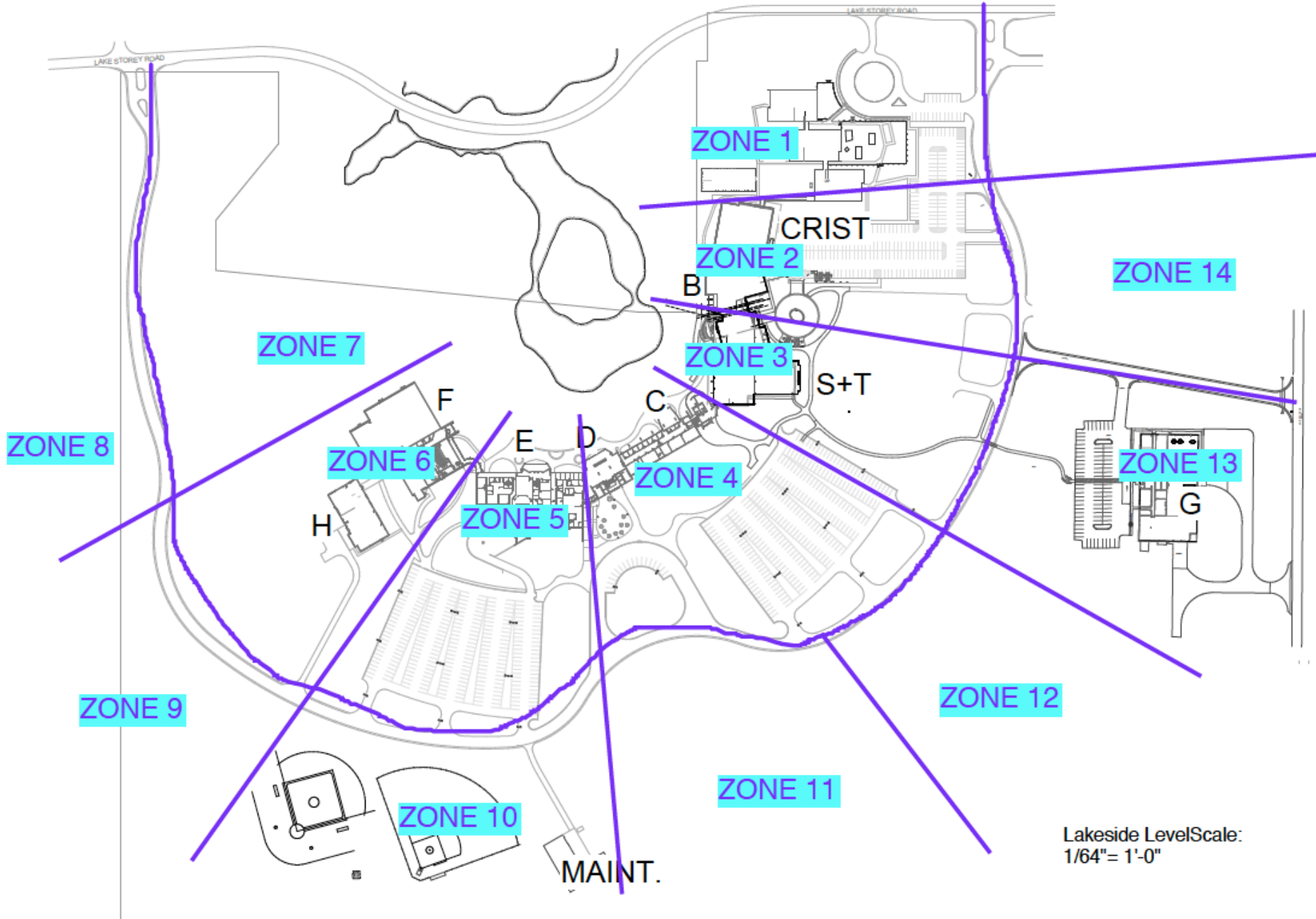
Bids on all work of this contract shall be subject to the provisions of the Illinois Prevailing Wage Act, 820 IL CS 130/0.01 et seq., the Equal Employment Opportunity Clause — rules of the Illinois Human Rights Commission, the Illinois Drug-Free Workplace Act, and all other applicable and governing laws and ordinances.

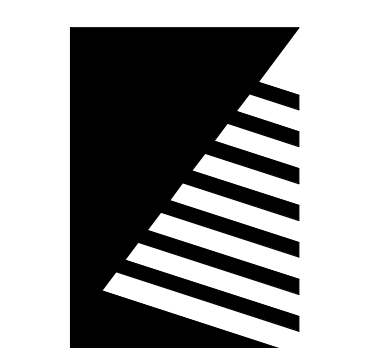
Correspondence and questions shall be directed to the office of:

Laura Nagel (lnagel@sandburg.edu / c: 224.627.8205)
Executive Director of Marketing & Public Relations
Carl Sandburg College
2400 Tom L. Wilson Blvd.
Galesburg, IL 61401

PREPARED BY: Laura Nagel, Executive Director of Marketing & Public Relations, Carl Sandburg College

ADDENDUM





Farnsworth GROUP

100 WALNUT STREET, SUITE 200
PEORIA, ILLINOIS 61602
(309) 689-9888 / info@f-w.com

www.f-w.com
Engineers | Architects | Surveyors | Scientists

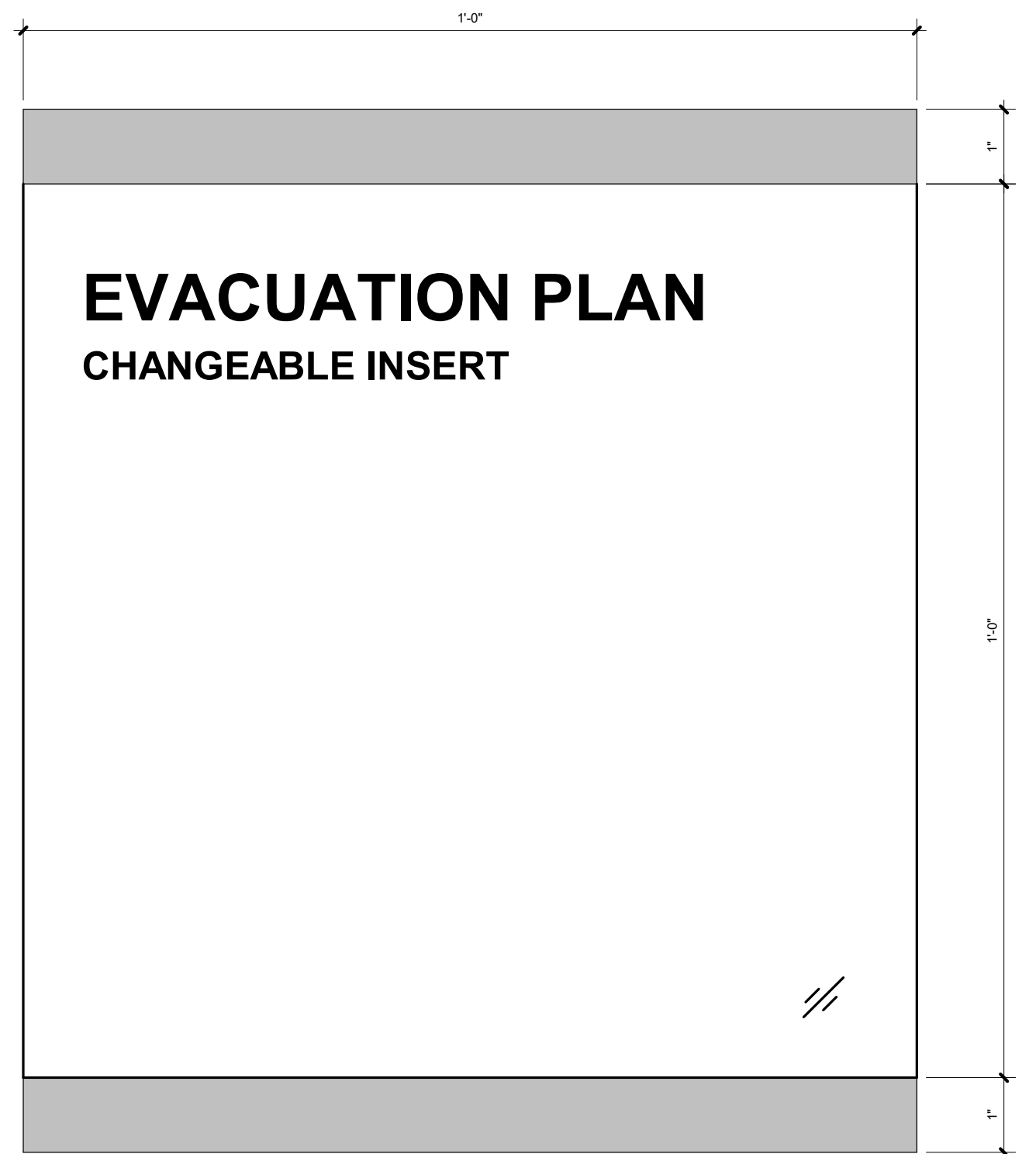
DATE: DESCRIPTION:

SIGNAGE COPY SCHEDULE					
ROOM NO.	BRAILLE	RAISED LETTER COPY	INSERT COPY	TYPE	NOTES
-	-	AREA OF REFUGE	EVACUATION PLAN	S-10	PICTOGRAM INCLUDED
-	-	ELEVATOR, IN CASE OF FIRE USE STAIRS	EVACUATION PLAN	S-4	PICTOGRAM INCLUDED
-	-	MAXIMUM OCCUPANCY ##	-	S-7	-
-	-	PUSH FOR HELP	-	S-9	-
-	-	STAIRS	STAIRS	S-6	PICTOGRAM INCLUDED
-	-	WELCOME	WELCOME WALL	S-11	SEE DETAIL 14/2.0
3102	3102	-	DENTAL WAITING	S-3	-
3103	3103	-	STAFF BREAK ROOM	S-3	-
3104	3104	-	CHANGING ROOM	S-3	-
3105	3105	-	RESTROOM	S-2C	-
3106	3106	-	OFFICE WITH NAMES (TBD)	S-3	-
3108	3108	-	RECEPTION	S-1	-
3109	3109	-	OFFICE WITH NAMES (TBD)	S-3	-
3110	3110	-	RESTROOM	S-2B	-
3111	3111	-	RADIOLOGY	S-3	-
3112	3112	-	RADIOLOGY VIEWING	S-3	-
3114	3114	-	DENTAL CLINIC	S-3	-
3115	3115	-	BULK STORAGE	S-1	-
3116	3116	-	STORAGE	S-1	-
3117	3117	-	MECHANICAL	S-1	-
3118	3118	-	STERILIZATION	S-3	-
3120	3120	-	RESTROOM	S-2C	-
3121	3121	-	RESTROOM	S-2C	-
3122	3122	-	LAUNDRY	S-1	-
3123	3123	-	FLEX OFFICE	S-3	-
3125	3125	-	JANITORIAL & IT	S-1	-
3126A	3126A	-	RESTROOM	S-2B	PICTOGRAM INCLUDED
3126B	3126B	-	RESTROOM	S-2A	PICTOGRAM INCLUDED
3126C	3126C	-	RESTROOM	S-2D	PICTOGRAM INCLUDED
3126D	3126D	-	RESTROOM	S-2D	PICTOGRAM INCLUDED
3126E	3126E	-	RESTROOM	S-2A	PICTOGRAM INCLUDED
3126F	3126F	-	RESTROOM	S-2B	PICTOGRAM INCLUDED
3129	3129	-	LAB - SIMULATION	S-3	-
3130	3130	-	FACULTY OFFICE WITH NAMES (TBD)	S-3	-
3132	3132	-	LAB - RADIOLOGY TECHNOLOGY	S-3	-
3132A	3132A	-	RADIOLOGY	S-3	-
3132B	3132B	-	SUPPORT	S-1	-
3133	3133	-	CLASSROOM - DHG SIMULATION	S-3	-
3133A	3133A	-	STORAGE	S-1	-
3134	3134	-	LAB - NURSING SKILLS	S-3	-
3134A	3134A	-	STORAGE	S-1	-
3135	3135	-	FACULTY OFFICE WITH NAMES (TBD)	S-3	-

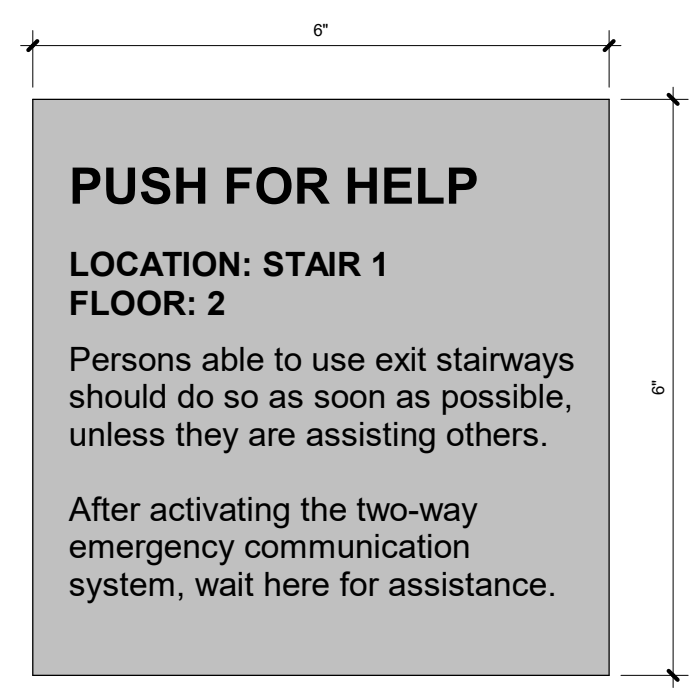
SIGNAGE COPY SCHEDULE					
ROOM NO.	BRAILLE	RAISED LETTER COPY	INSERT COPY	TYPE	NOTES
3136	3136	-	CLASSROOM & LAB - NURSE / MEDICAL ASSISTANT	S-3	-
3137	3137	-	STORAGE	S-1	-
3140	3140	-	MECHANICAL, JANITORIAL & ELECTRICAL	S-3	-
3140A	3140A	-	ELECTRICAL	S-1	-
3141	3141	-	CLASSROOM	S-3	-
3201A	3201A	-	RESTROOM	S-2B	PICTOGRAM INCLUDED
3201B	3201B	-	RESTROOM	S-2C	PICTOGRAM INCLUDED
3201C	3201C	-	RESTROOM	S-2D	PICTOGRAM INCLUDED
3201D	3201D	-	RESTROOM	S-2D	PICTOGRAM INCLUDED
3201E	3201E	-	RESTROOM	S-2C	PICTOGRAM INCLUDED
3201F	3201F	-	RESTROOM	S-2B	PICTOGRAM INCLUDED
3202	3202	-	JANITORIAL	S-1	-
3203	3203	-	FACULTY OFFICE WITH NAMES (TBD)	S-3	-
3204	3204	-	FACULTY OFFICE WITH NAMES (TBD)	S-3	-
3205	3205	-	FACULTY OFFICE WITH NAMES (TBD)	S-3	-
3206	3206	-	FACULTY OFFICE WITH NAMES (TBD)	S-3	-
3207	3207	-	FACULTY OFFICE WITH NAMES (TBD)	S-3	-
3208	3208	-	FACULTY OFFICE WITH NAMES (TBD)	S-3	-
3209	3209	-	DEAN SUITE	S-3	-
3210	3210	-	DEAN OFFICE WITH NAMES (TBD)	S-3	-
3211	3211	-	MEETING ROOM	S-3	-
3212	3212	-	DEAN OFFICE WITH NAMES (TBD)	S-3	-
3213	3213	-	CLASSROOM - HEALTH MED	S-3	-
3214	3214	-	MEDICINE	S-3	-
3215	3215	-	STORAGE	S-1	-
3216	3216	-	LAB - PHYSICS	S-3	-
3217	3217	-	CLEANING	S-3	-
3218	3218	-	LAB - CHEMISTRY	S-3	-
3219	3219	-	LAB - MICROBIOLOGY	S-3	-
3220	3220	-	LAB - BIOLOGY	S-3	-
3221	3221	-	CLASSROOM - COLLABORATION	S-3	-
3222	3222	-	SUPPORT	S-1	-
3223	3223	-	ROOF ACCESS	S-5	-
3225	3225	-	BUSINESS CENTER	S-3	-
3226	3226	-	WELLNESS	S-3	-
3227	3227	-	WELLNESS	S-3	-
3228	3228	-	WELLNESS	S-3	-
3229	3229	-	WELLNESS	S-3	-
3230	3230	-	ELECTRICAL	S-1	-

SIGNAGE MATERIAL LEGEND

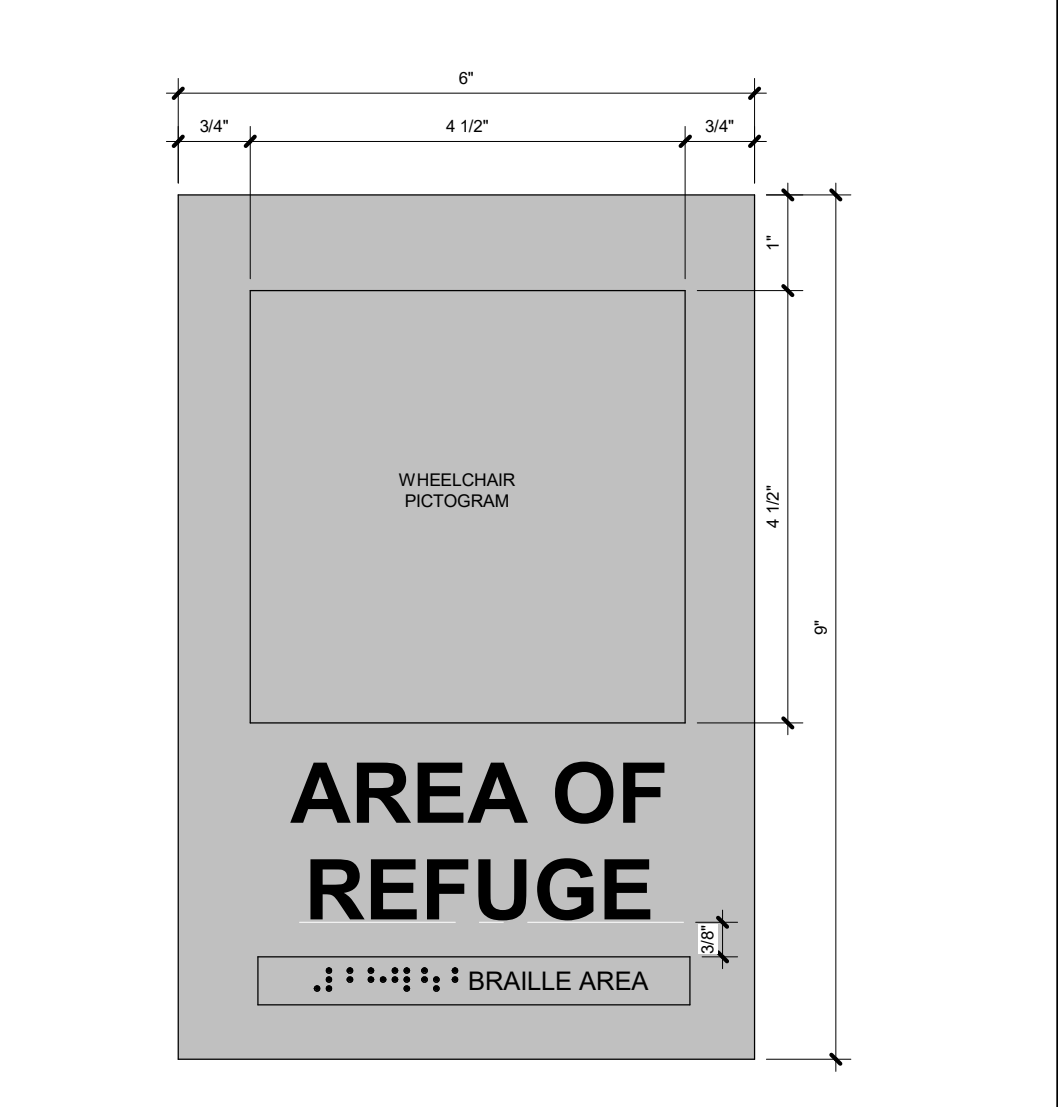
- BRUSHED ALUMINUM 1/4" THICK
 - CHANGEABLE INSERT WINDOW BEHIND CLEAR GLASS/PETLIC
- FONTS:
 HEADINGS: INDUSTRY (BLACK)
 BODY: OPEN SANS
 LETTER COLOR:
 PMS 281 C



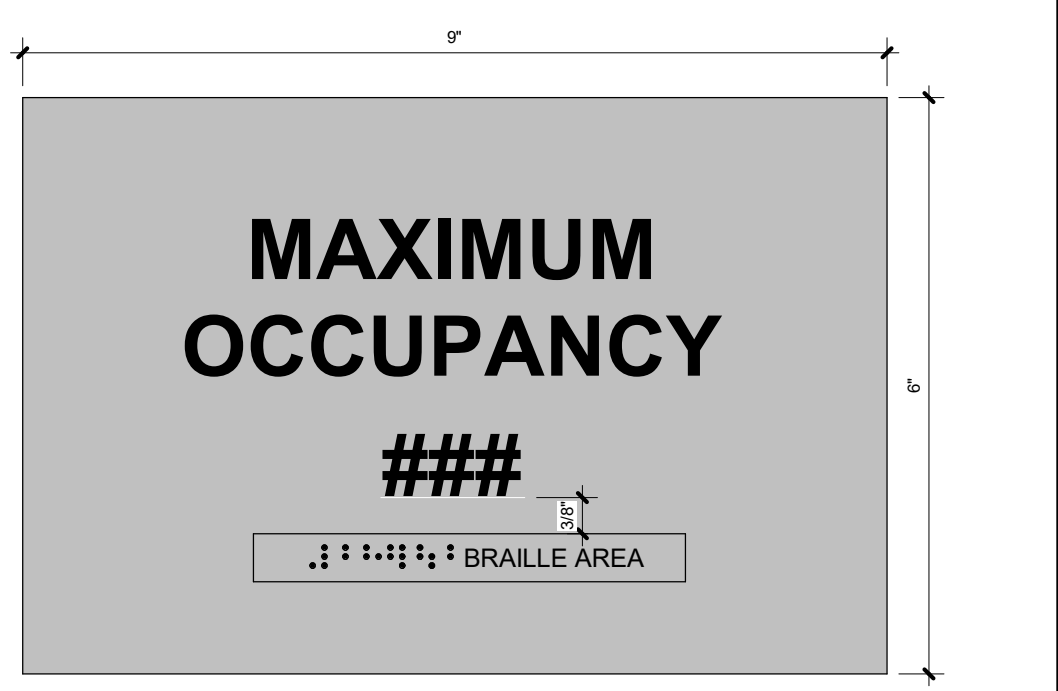
13 S-10 SCALE: 6" = 1'-0"



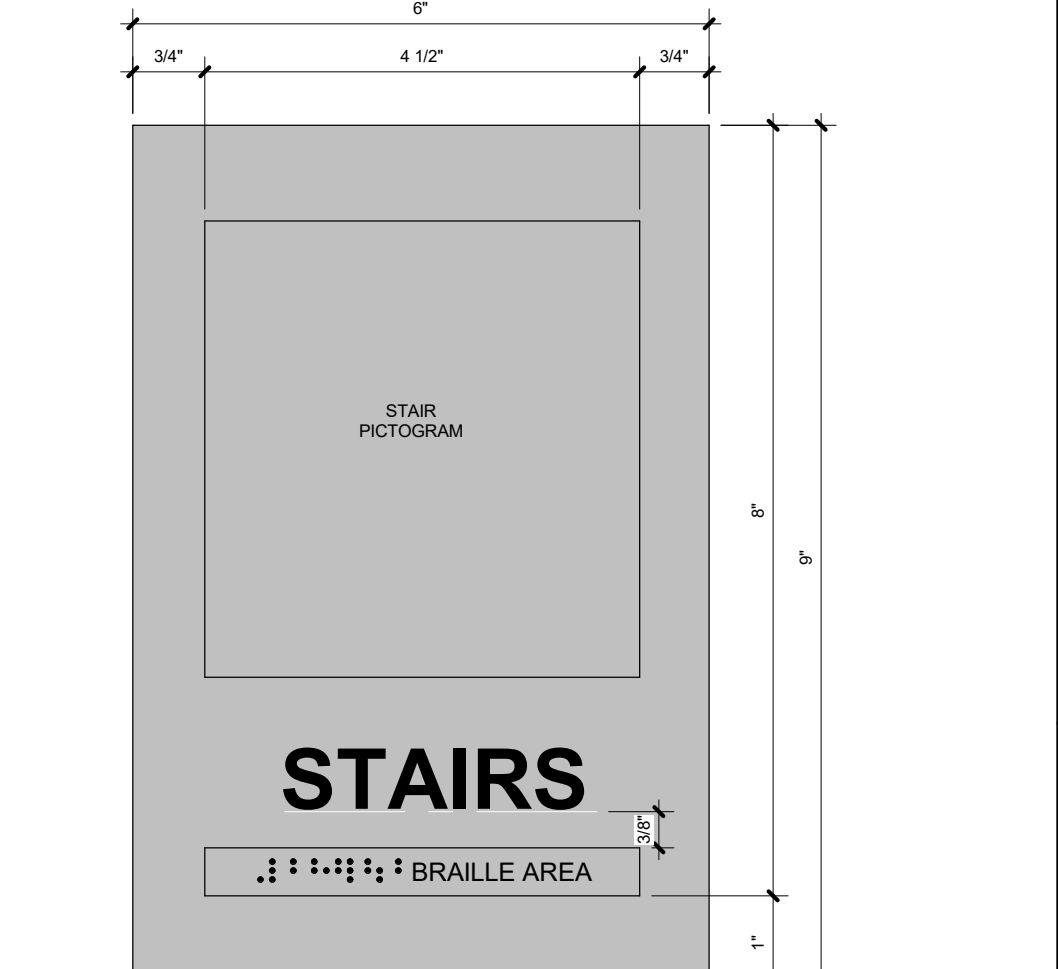
12 S-9 SCALE: 6" = 1'-0"



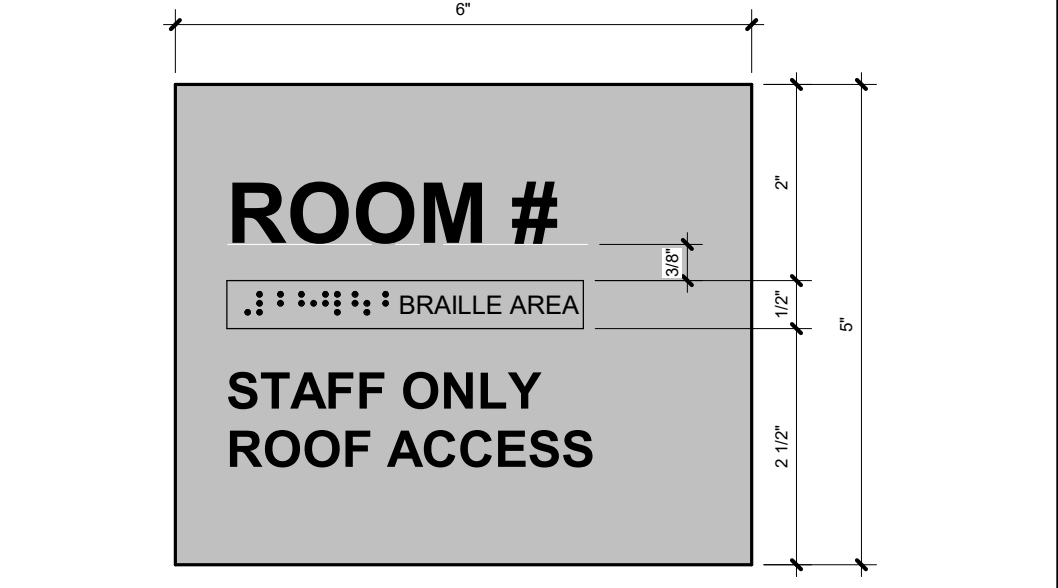
11 S-8 SCALE: 6" = 1'-0"



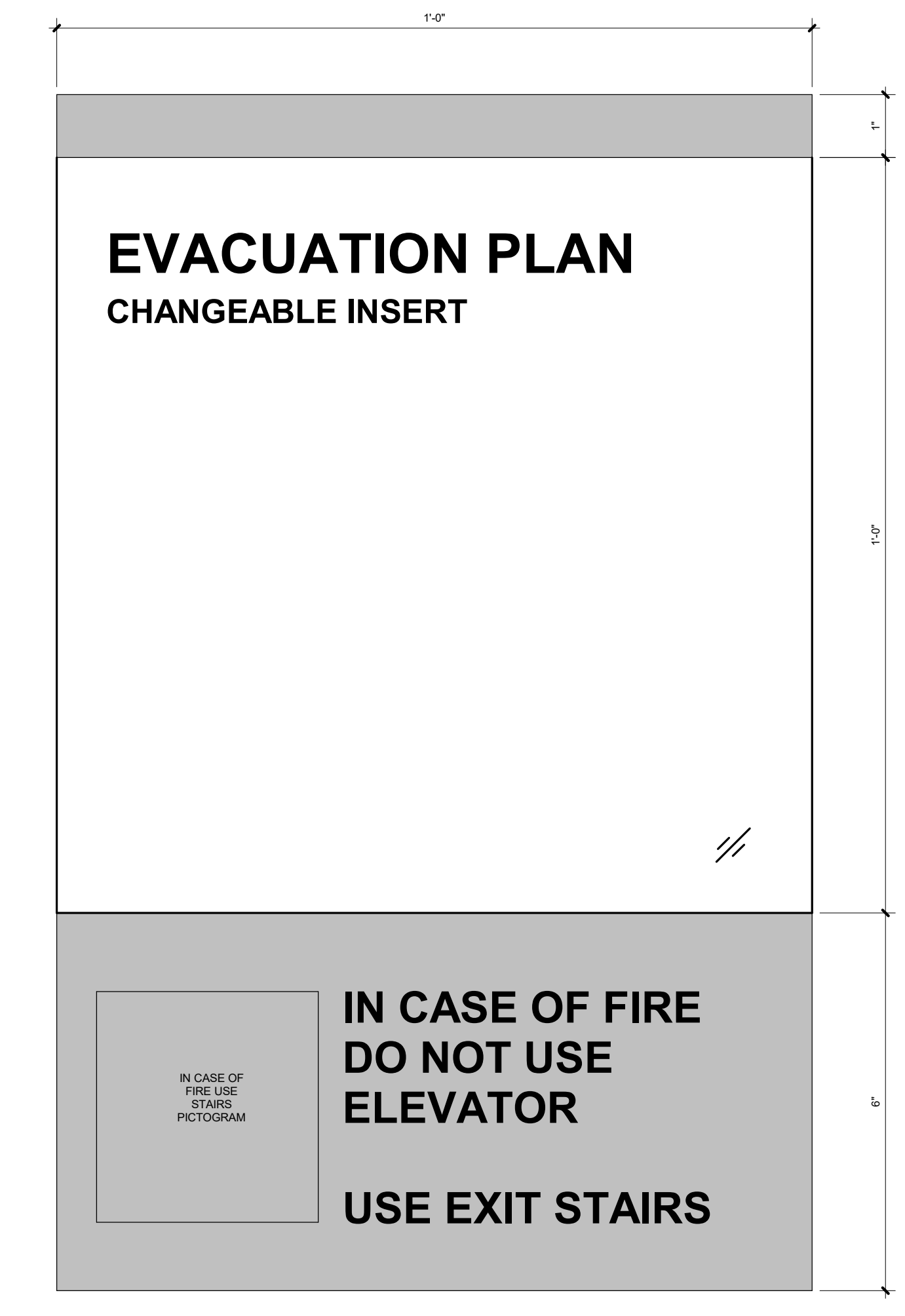
10 S-7 SCALE: 6" = 1'-0"



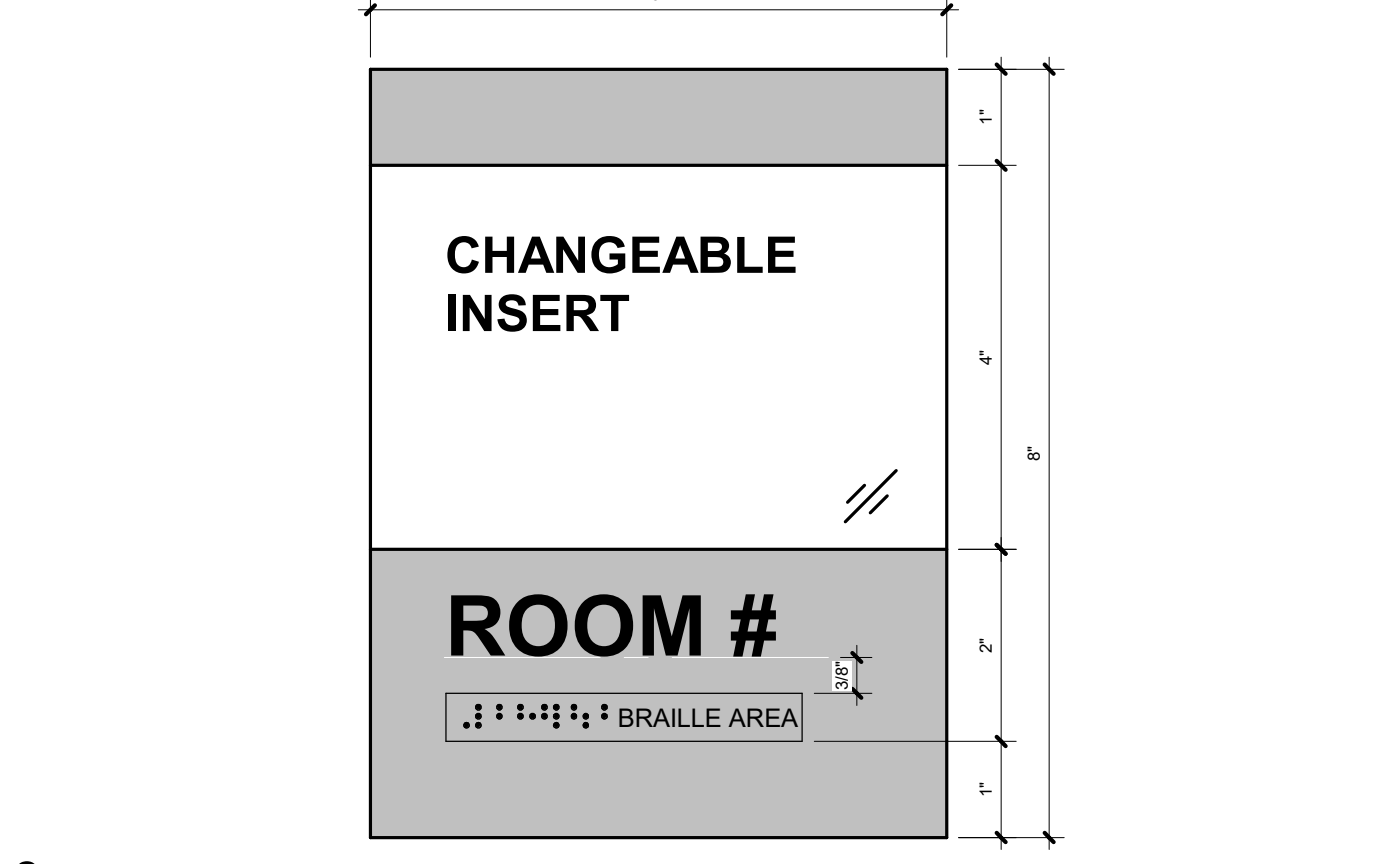
9 S-6 SCALE: 6" = 1'-0"



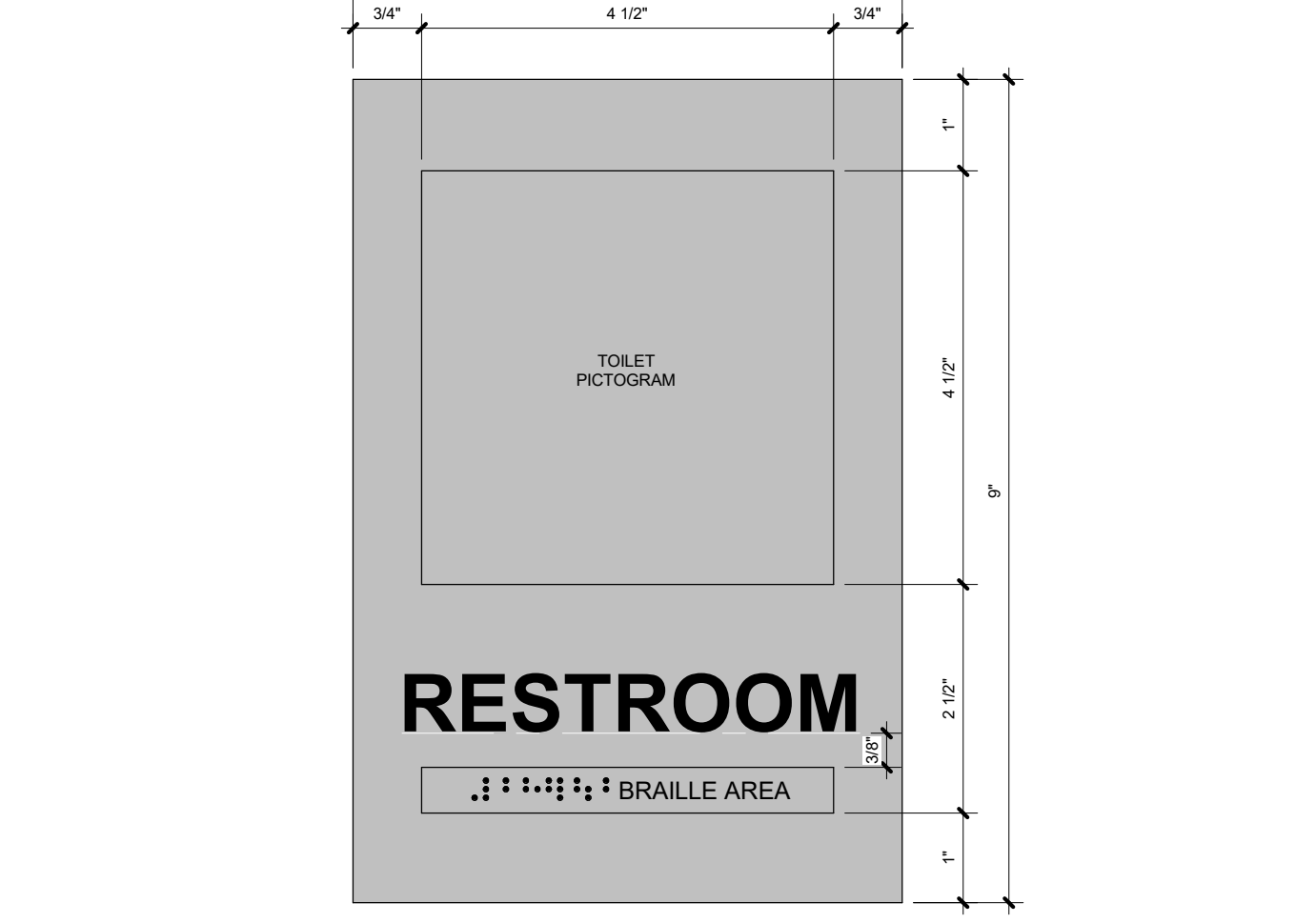
8 S-5 SCALE: 6" = 1'-0"



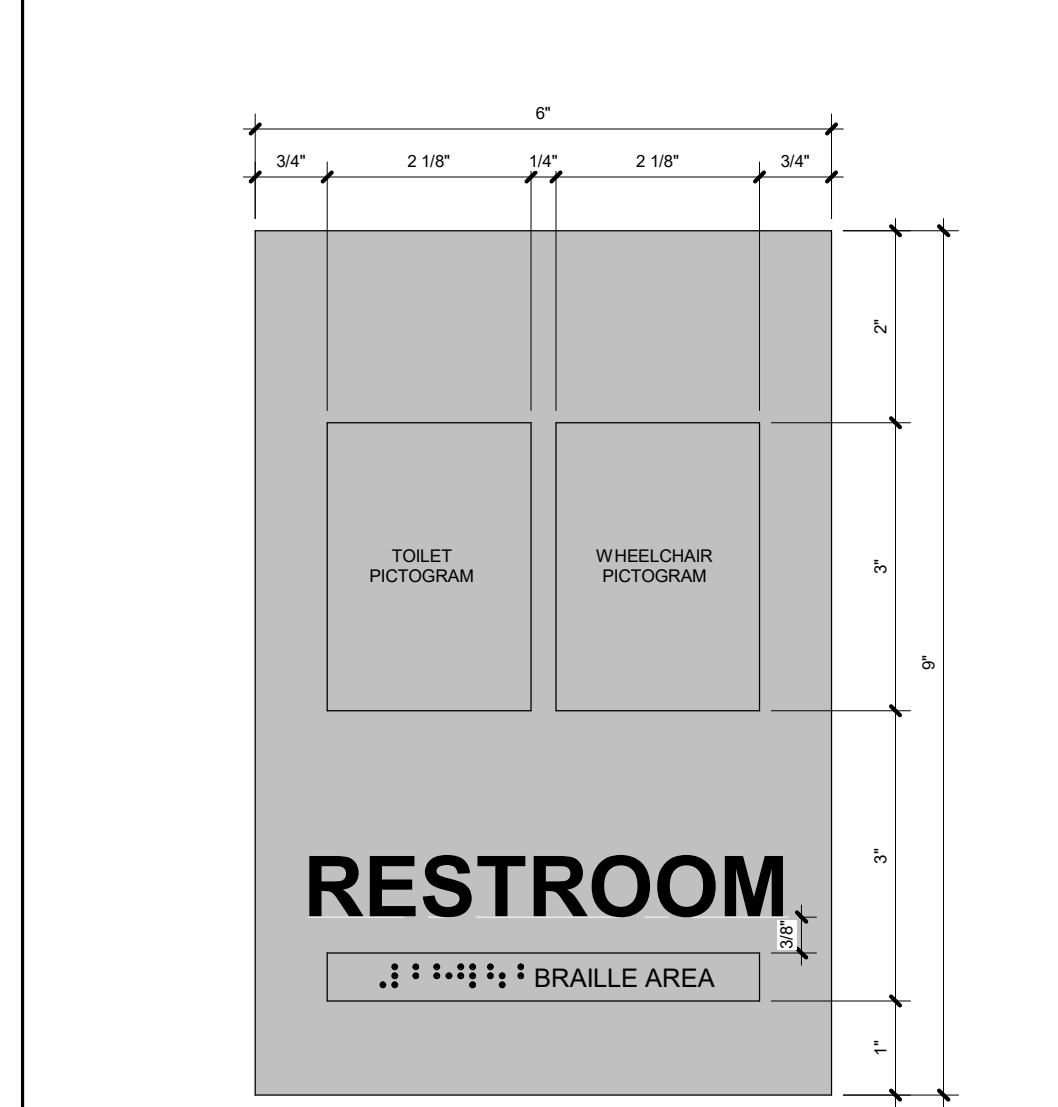
7 S-4 SCALE: 6" = 1'-0"



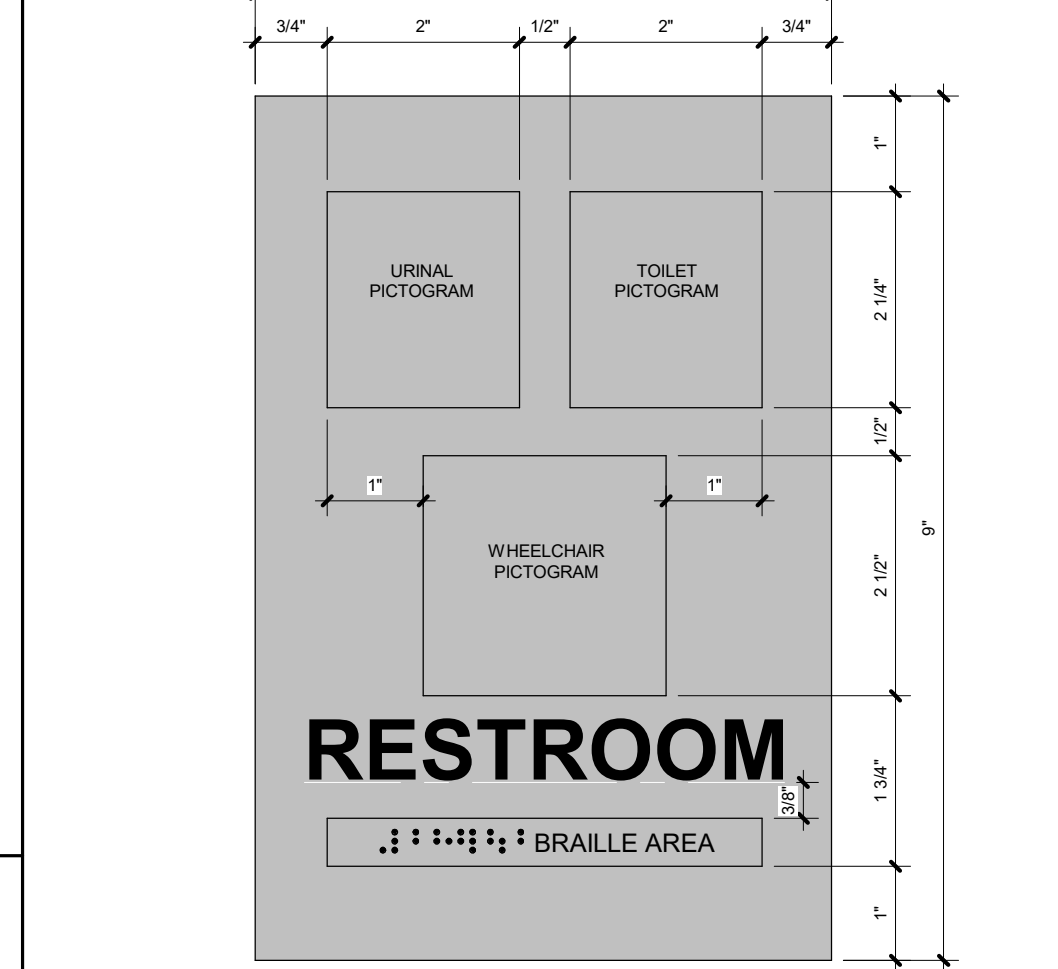
6 S-3 SCALE: 6" = 1'-0"



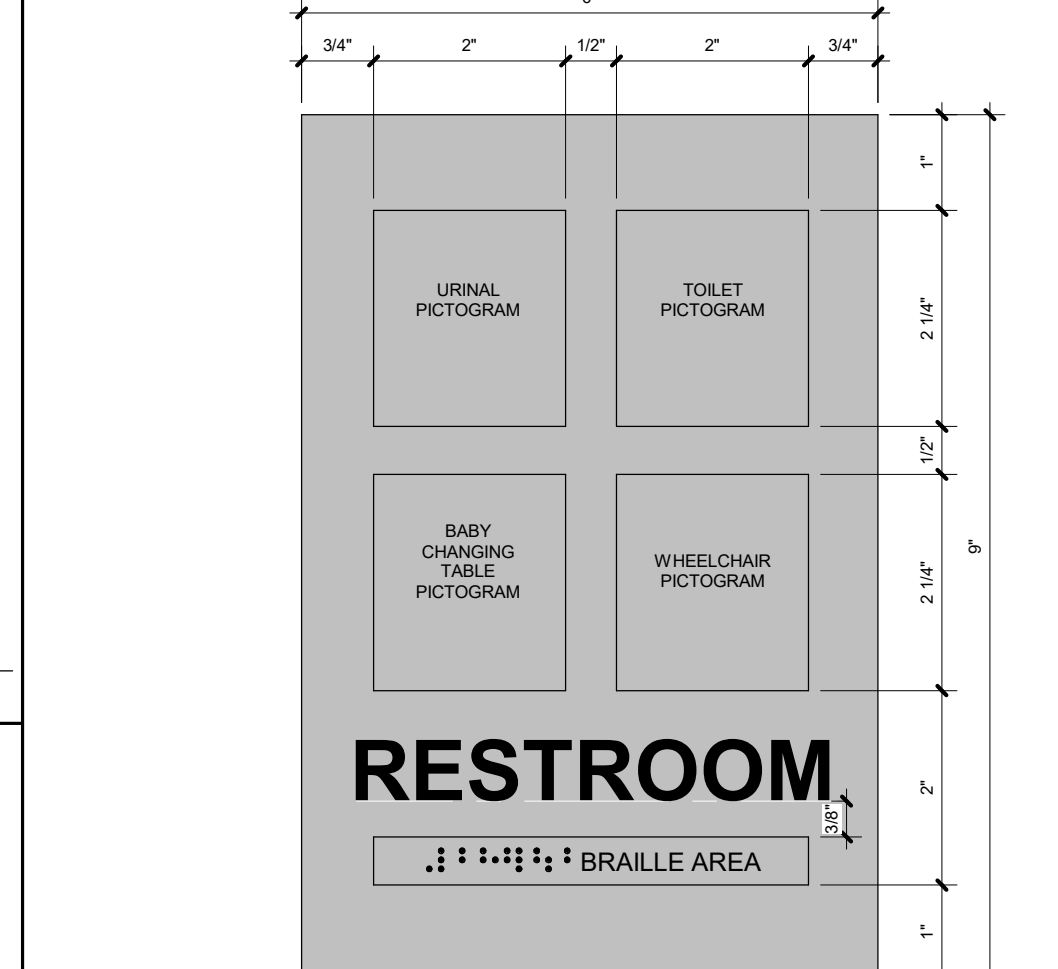
5 S-2D SCALE: 6" = 1'-0"



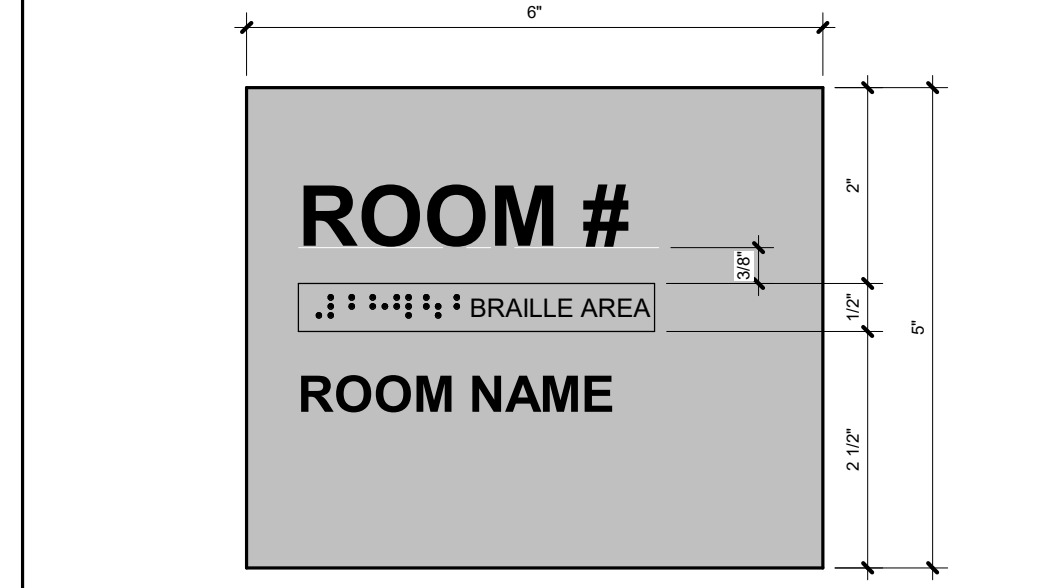
4 S-2C SCALE: 6" = 1'-0"



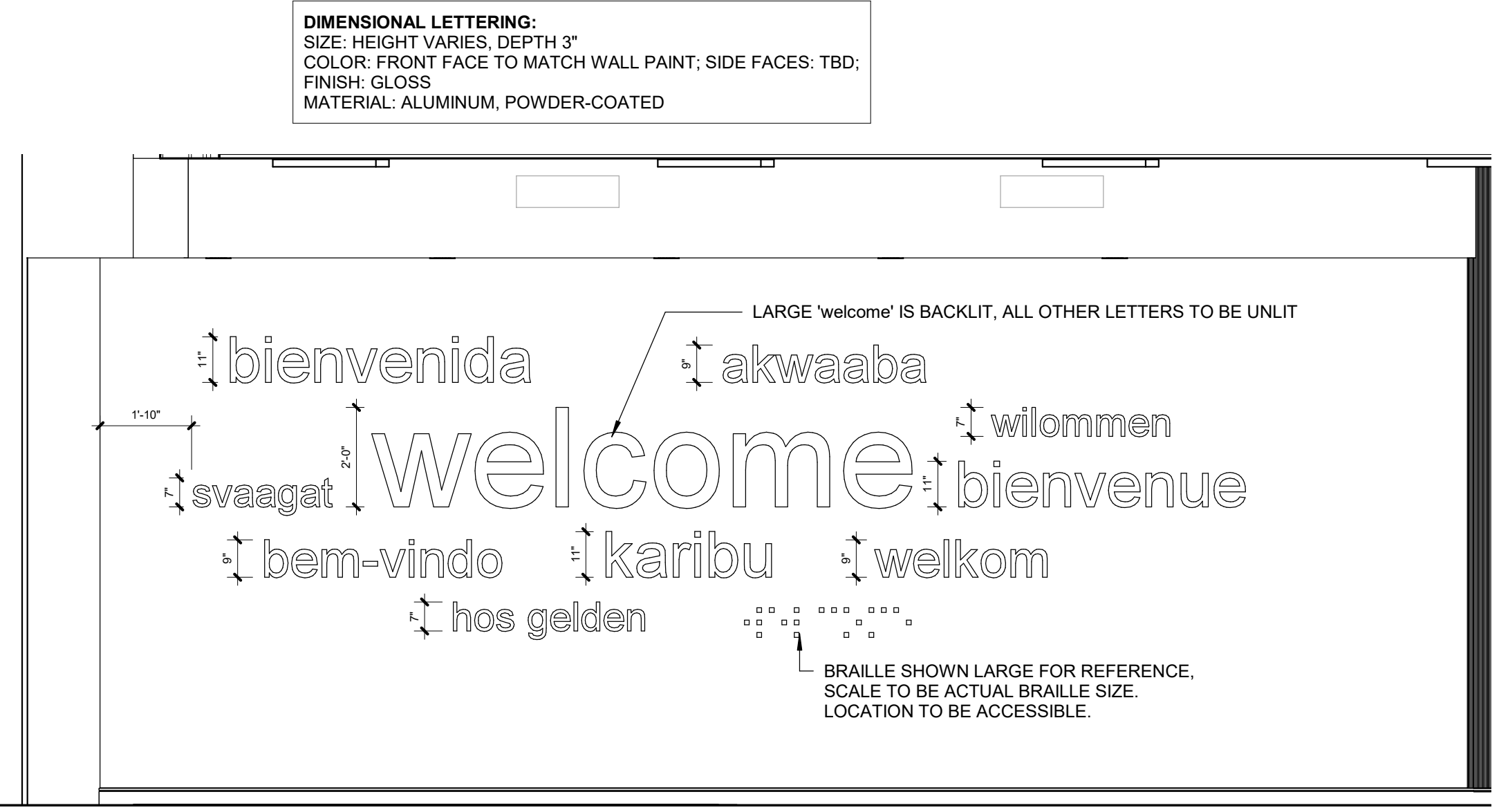
3 S-2B SCALE: 6" = 1'-0"



2 S-2A SCALE: 6" = 1'-0"



1 S-1 SCALE: 6" = 1'-0"



14 S-11, WELCOME WALL DIMENSIONAL SIGNAGE SCALE: 3/8" = 1'-0"

SIGNAGE COORD.

PROJECT: Carl Sandburg College

Science + Technology Center
BP2 - Site Demolition & New Construction

2400 Tom Wilson Blvd
Galesburg, IL 61401

DATE: 02/23/2023

DESIGNED: HMM

DRAWN: HMM

REVIEWED:

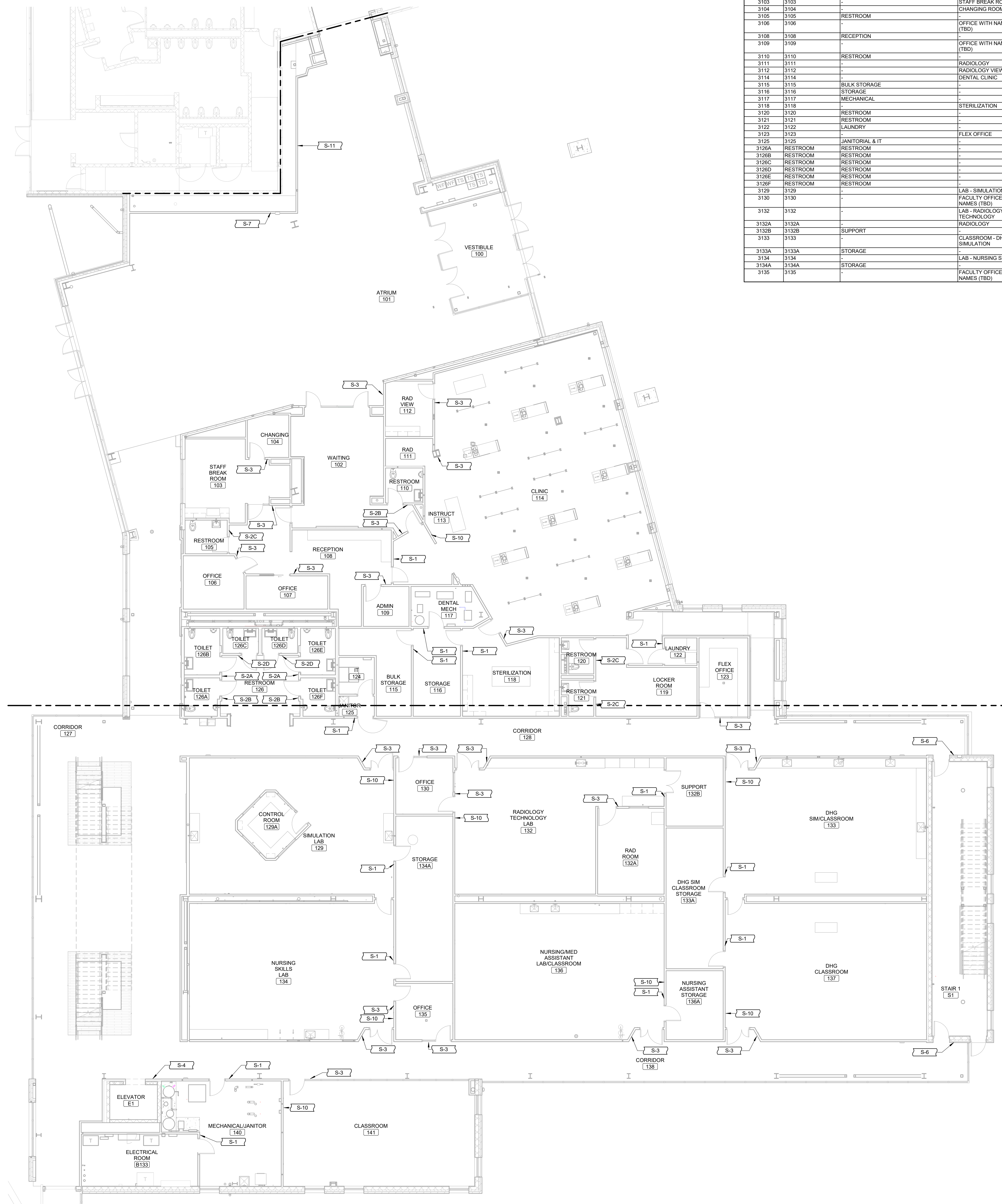
GENERAL INFORMATION

12.0

PROJECT NO.: 02110287.00

SIGNAGE COPY SCHEDULE					
ROOM NO.	BRAILLE	RAISED LETTER COPY	INSERT COPY	TYPE	NOTES
-	-	AREA OF REFUGE	EVAUATION PLAN	S-10	PICTOGRAM INCLUDED
-	-	AREA OF REFUGE	EVAUATION PLAN	S-8	PICTOGRAM INCLUDED
-	-	ELEVATOR IN CASE OF FIRE USE STAIRS	EVAUATION PLAN	S-4	PICTOGRAM INCLUDED
-	-	MAXIMUM OCCUPANCY #	PUSH FOR HELP	S-7	-
-	-	MAXIMUM OCCUPANCY #	PUSH FOR HELP	S-9	-
-	-	STAIRS	STAIRS	S-6	PICTOGRAM INCLUDED
-	-	WELCOME	WELCOME WALL	S-11	SEE DETAIL 412.0
3102	3102	-	DENTAL WAITING	S-3	-
3103	3103	-	STAFF BREAK ROOM	S-3	-
3104	3104	-	CHANGING ROOM	S-3	-
3105	3105	RESTROOM	-	S-2C	-
3106	3106	-	OFFICE WITH NAMES (TBD)	S-3	-
3108	3108	RECEPTION	-	S-1	-
3109	3109	-	OFFICE WITH NAMES (TBD)	S-3	-
3110	3110	RESTROOM	-	S-2B	-
3111	3111	-	RADIOLOGY	S-3	-
3112	3112	-	RADIOLOGY VIEWING	S-3	-
3114	3114	-	DENTAL CLINIC	S-3	-
3115	3115	BULK STORAGE	-	S-1	-
3116	3116	STORAGE	-	S-1	-
3117	3117	MECHANICAL	-	S-1	-
3118	3118	-	STERILIZATION	S-3	-
3120	3120	RESTROOM	-	S-2C	-
3121	3121	RESTROOM	-	S-2C	-
3122	3122	LAUNDRY	-	S-1	-
3123	3123	-	FLEX OFFICE	S-3	-
3125	3125	JANITORIAL & IT	-	S-1	-
3126A	3126A	RESTROOM	-	S-2B	PICTOGRAM INCLUDED
3126B	3126B	RESTROOM	-	S-2A	PICTOGRAM INCLUDED
3126C	3126C	RESTROOM	-	S-2D	PICTOGRAM INCLUDED
3126D	3126D	RESTROOM	-	S-2D	PICTOGRAM INCLUDED
3126E	3126E	RESTROOM	-	S-2A	PICTOGRAM INCLUDED
3126F	3126F	RESTROOM	-	S-2B	PICTOGRAM INCLUDED
3129	3129	-	LAB - SIMULATION	S-3	-
3130	3130	-	FACULTY OFFICE WITH NAMES (TBD)	S-3	-
3132	3132	-	LAB - RADIOLOGY TECHNOLOGY	S-3	-
3132A	3132A	-	RADIOLOGY	S-3	-
3132B	3132B	SUPPORT	-	S-1	-
3133	3133	-	CLASSROOM - DHG SIMULATION	S-3	-
3133A	3133A	STORAGE	-	S-1	-
3134	3134	-	LAB - NURSING SKILLS	S-3	-
3134A	3134A	STORAGE	-	S-1	-
3135	3135	-	FACULTY OFFICE WITH NAMES (TBD)	S-3	-

SIGNAGE COPY SCHEDULE					
ROOM NO.	BRAILLE	RAISED LETTER COPY	INSERT COPY	TYPE	NOTES
3136	3136	-	CLASSROOM & LAB - NURSING MEDICAL ASSISTANT	S-3	-
3136A	3136A	STORAGE	-	S-1	-
3137	3137	MECHANICAL JANITORIAL & ELECTRICAL	-	S-3	-
3140	3140	ELECTRICAL	-	S-1	-
3140A	3140A	-	CLASSROOM	S-1	-
3141	3141	-	-	S-3	-
3201A	3201A	RESTROOM	-	S-2B	PICTOGRAM INCLUDED
3201B	3201B	RESTROOM	-	S-2C	PICTOGRAM INCLUDED
3201C	3201C	RESTROOM	-	S-2D	PICTOGRAM INCLUDED
3201D	3201D	RESTROOM	-	S-2D	PICTOGRAM INCLUDED
3201E	3201E	RESTROOM	-	S-2C	PICTOGRAM INCLUDED
3201F	3201F	RESTROOM	-	S-2B	PICTOGRAM INCLUDED
3202	3202	RESTROOM	-	S-1	-
3203	3203	-	FACULTY OFFICE WITH NAMES (TBD)	S-3	-
3204	3204	-	FACULTY OFFICE WITH NAMES (TBD)	S-3	-
3205	3205	-	FACULTY OFFICE WITH NAMES (TBD)	S-3	-
3206	3206	-	FACULTY OFFICE WITH NAMES (TBD)	S-3	-
3207	3207	-	FACULTY OFFICE WITH NAMES (TBD)	S-3	-
3208	3208	-	FACULTY OFFICE WITH NAMES (TBD)	S-3	-
3209	3209	-	DEAN SUITE	S-3	-
3210	3210	-	DEAN OFFICE WITH NAMES (TBD)	S-3	-
3211	3211	-	MEETING ROOM	S-3	-
3212	3212	-	DEAN OFFICE WITH NAMES (TBD)	S-3	-
3213	3213	-	CLASSROOM - HEALTH MED	S-3	-
3214	3214	-	LAB - PHYSICS	S-3	-
3215	3215	STORAGE	-	S-1	-
3216	3216	-	LAB - CHEMISTRY	S-3	-
3217	3217	-	LAB - MICROBIOLOGY	S-3	-
3218	3218	-	LAB - BIOLOGY	S-3	-
3219	3219	-	LAB - BIOLOGY COLLABORATION	S-3	-
3220	3220	-	LAB - BIOLOGY	S-3	-
3221	3221	-	CLASSROOM - COLLABORATION	S-3	-
3222	3222	SUPPORT	-	S-1	-
3223	3223	ROOF ACCESS	-	S-6	-
3225	3225	-	BUSINESS CENTER	S-3	-
3226	3226	WELLNESS	-	S-3	-
3227	3227	WELLNESS	-	S-3	-
3228	3228	WELLNESS	-	S-3	-
3229	3229	WELLNESS	-	S-3	-
3230	3230	ELECTRICAL	-	S-1	-



SIGNAGE COORD.

PROJECT:
Carl Sandburg College

**Science + Technology Center
BP2 - Site Demolition
& New Construction**

2400 Tom Wilson Blvd
Galesburg, IL 61401

DATE: 02/23/2023
DESIGNED: HMM
DRAWN: HMM
REVIEWED:

**FIRST FLOOR
SIGNAGE PLAN**

SHEET NUMBER:

12.1

PROJECT NO.: 02110287.00





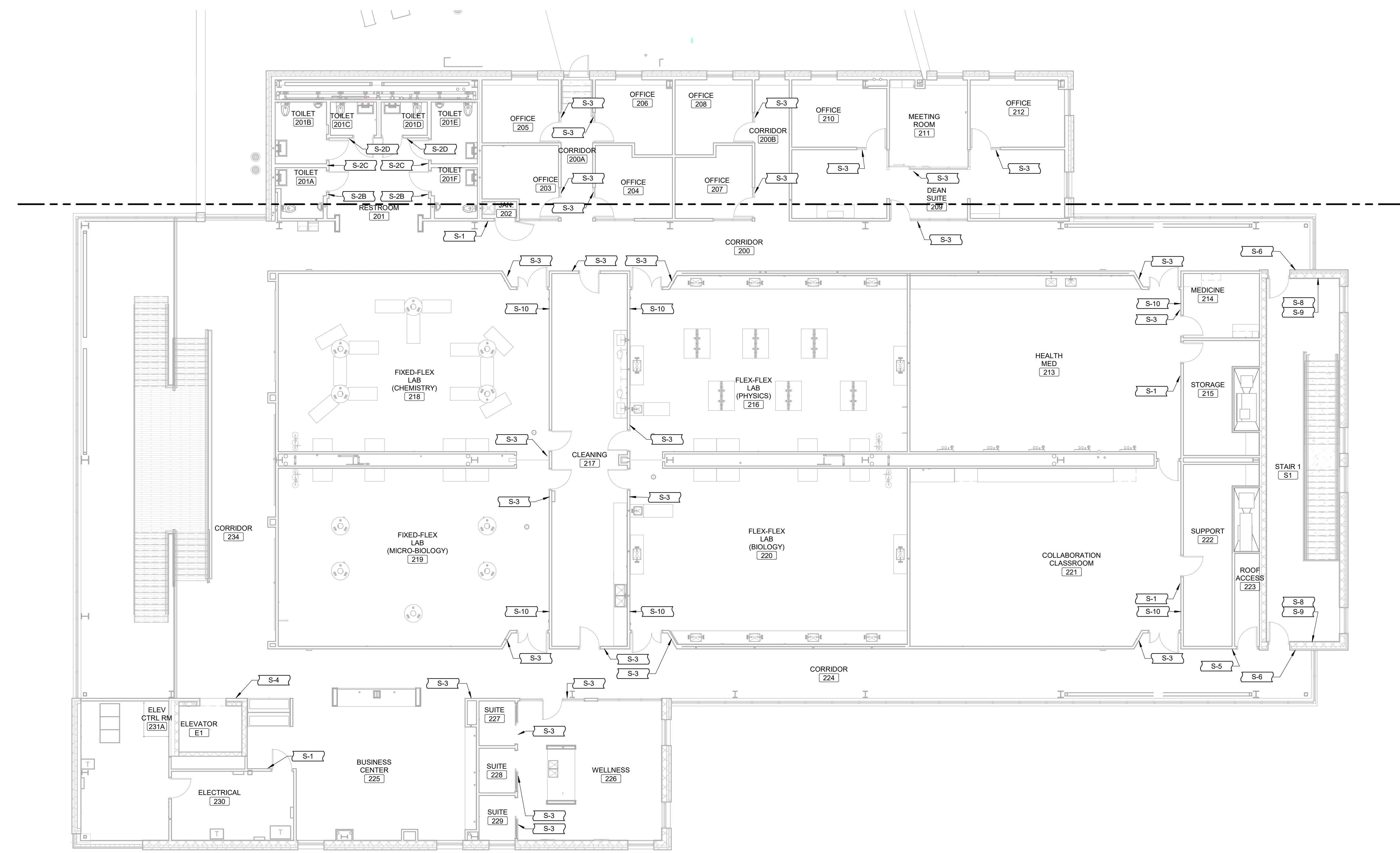
Farnsworth
GROUP
100 WALNUT STREET, SUITE 200
PEORIA, ILLINOIS 61602
309.689.9888 / info@f-w.com

www.f-w.com
Engineers | Architects | Surveyors | Scientists

DATE: DESCRIPTION:

SIGNAGE COPY SCHEDULE					
ROOM NO.	BRAILLE	RAISED LETTER COPY	INSERT COPY	TYPE	NOTES
-	-	AREA OF REFUGE	EVACUATION PLAN	S-10	PICTOGRAM INCLUDED
-	-	ELEVATOR IN CASE OF FIRE USE STAIRS	-	S-4	PICTOGRAM INCLUDED
-	-	MAXIMUM OCCUPANCY ##	-	S-7	-
-	-	PUSH FOR HELP	-	S-9	-
-	-	STAIRS	-	S-6	PICTOGRAM INCLUDED
-	-	WELCOME	WELCOME WALL	S-11	SEE DETAIL 422.0
3102	3102	-	DENTAL WAITING	S-3	-
3103	3103	-	STAFF BREAK ROOM	S-3	-
3104	3104	-	CHANGING ROOM	S-3	-
3105	3105	RESTROOM	-	S-2C	-
3106	3106	-	OFFICE WITH NAMES (TBD)	S-3	-
3108	3108	RECEPTION	-	S-1	-
3109	3109	-	OFFICE WITH NAMES (TBD)	S-3	-
3110	3110	RESTROOM	-	S-2B	-
3111	3111	-	RADIOLOGY	S-3	-
3112	3112	-	RADIOLOGY VIEWING	S-3	-
3114	3114	-	DENTAL CLINIC	S-1	-
3115	3115	BULK STORAGE	-	S-1	-
3116	3116	STORAGE	-	S-1	-
3117	3117	MECHANICAL	-	S-1	-
3118	3118	-	STERILIZATION	S-3	-
3120	3120	RESTROOM	-	S-2C	-
3121	3121	RESTROOM	-	S-2C	-
3122	3122	-	LAUNDRY	S-1	-
3123	3123	-	FLEX OFFICE	S-3	-
3125	3125	JANITORIAL & IT	-	S-1	-
3125A	3125A	RESTROOM	-	S-2B	PICTOGRAM INCLUDED
3125B	3125B	RESTROOM	-	S-2A	PICTOGRAM INCLUDED
3126C	3126C	RESTROOM	-	S-2D	PICTOGRAM INCLUDED
3126D	3126D	RESTROOM	-	S-2D	PICTOGRAM INCLUDED
3126E	3126E	RESTROOM	-	S-2A	PICTOGRAM INCLUDED
3126F	3126F	RESTROOM	-	S-2B	PICTOGRAM INCLUDED
3129	3129	-	LAB - SIMULATION	S-3	-
3130	3130	-	FACULTY OFFICE WITH NAMES (TBD)	S-3	-
3132	3132	-	LAB - RADIOLOGY TECHNOLOGY	S-3	-
3132A	3132A	-	RADIOLOGY	S-3	-
3132B	3132B	SUPPORT	-	S-1	-
3133	3133	-	CLASSROOM - DHG SIMULATION	S-3	-
3133A	3133A	STORAGE	-	S-1	-
3134	3134	-	LAB - NURSING SKILLS	S-3	-
3134A	3134A	STORAGE	-	S-1	-
3135	3135	-	FACULTY OFFICE WITH NAMES (TBD)	S-3	-

SIGNAGE COPY SCHEDULE					
ROOM NO.	BRAILLE	RAISED LETTER COPY	INSERT COPY	TYPE	NOTES
3136	3136	-	CLASSROOM & LAB - NURSE / MEDICAL ASSISTANT	S-3	-
3136A	3136A	STORAGE	-	S-1	-
3137	3137	MECHANICAL JANITORIAL & ELECTRICAL	-	S-3	-
3140	3140	-	CLASSROOM - DHG	S-3	-
3140A	3140A	ELECTRICAL	-	S-1	-
3141	3141	-	CLASSROOM	S-3	-
3201A	3201A	RESTROOM	-	S-2B	PICTOGRAM INCLUDED
3201B	3201B	RESTROOM	-	S-2C	PICTOGRAM INCLUDED
3201C	3201C	RESTROOM	-	S-2D	PICTOGRAM INCLUDED
3201D	3201D	RESTROOM	-	S-2D	PICTOGRAM INCLUDED
3201E	3201E	RESTROOM	-	S-2C	PICTOGRAM INCLUDED
3201F	3201F	RESTROOM	-	S-2B	PICTOGRAM INCLUDED
3202	3202	RESTROOM	-	S-1	-
3203	3203	-	FACULTY OFFICE WITH NAMES (TBD)	S-3	-
3204	3204	-	FACULTY OFFICE WITH NAMES (TBD)	S-3	-
3205	3205	-	FACULTY OFFICE WITH NAMES (TBD)	S-3	-
3206	3206	-	FACULTY OFFICE WITH NAMES (TBD)	S-3	-
3207	3207	-	FACULTY OFFICE WITH NAMES (TBD)	S-3	-
3208	3208	-	FACULTY OFFICE WITH NAMES (TBD)	S-3	-
3209	3209	-	DEAN SUITE	S-3	-
3210	3210	-	DEAN OFFICE WITH NAMES (TBD)	S-3	-
3211	3211	-	MEETING ROOM	S-3	-
3212	3212	-	DEAN OFFICE WITH NAMES (TBD)	S-3	-
3213	3213	-	CLASSROOM - HEALTH MED	S-3	-
3214	3214	-	MEDICINE	S-3	-
3215	3215	STORAGE	-	S-1	-
3216	3216	-	LAB - PHYSICS	S-3	-
3217	3217	-	CLEANING	S-3	-
3218	3218	-	LAB - CHEMISTRY	S-3	-
3219	3219	-	LAB - MICROBIOLOGY	S-3	-
3220	3220	-	LAB - BIOLOGY	S-3	-
3221	3221	-	CLASSROOM - COLLABORATION	S-3	-
3222	3222	SUPPORT	-	S-1	-
3223	3223	ROOF ACCESS	-	S-5	-
3225	3225	-	BUSINESS CENTER	S-3	-
3226	3226	-	WELLNESS	S-3	-
3227	3227	-	WELLNESS	S-3	-
3228	3228	-	WELLNESS	S-3	-
3229	3229	-	WELLNESS	S-3	-
3230	3230	ELECTRICAL	-	S-1	-



SIGNAGE COORD.

PROJECT:
Carl Sandburg College

**Science + Technology Center
BP2 - Site Demolition & New Construction**

2400 Tom Wilson Blvd
Galesburg, IL 61401

DATE: 02/23/2023
DESIGNED: Designer
DRAWN: Author
REVIEWED: Approver

**SECOND FLOOR
SIGNAGE PLAN**

SHEET NUMBER:

12.2

PROJECT NO.: 02110287.00

